

COMPRESSOR CRANKCASE BREATHER

Part Nos. 537543 & 650953

Assembly Instructions for Breather Valve
Part Nos. 575306 & 650954

APRIL, 1997

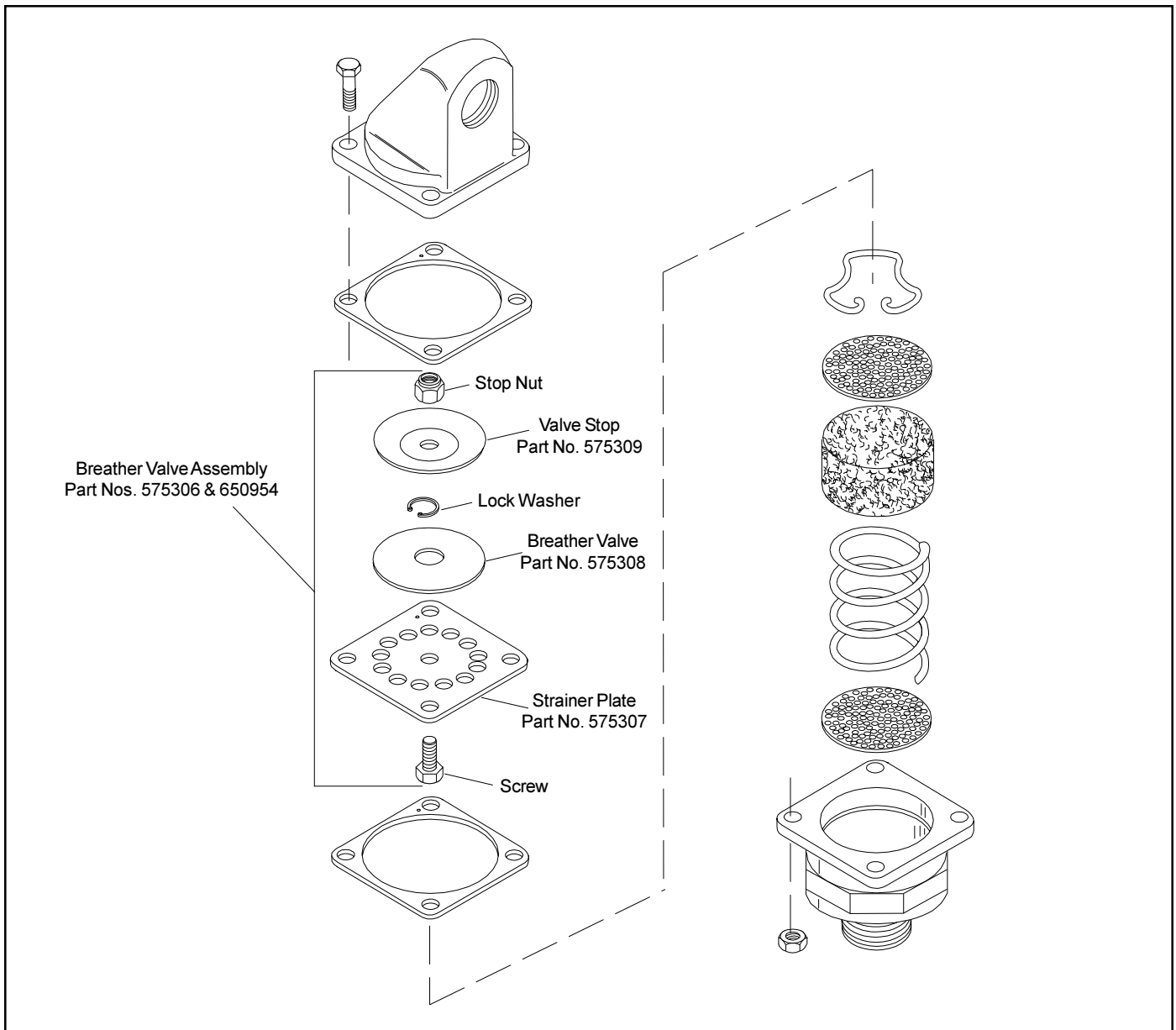


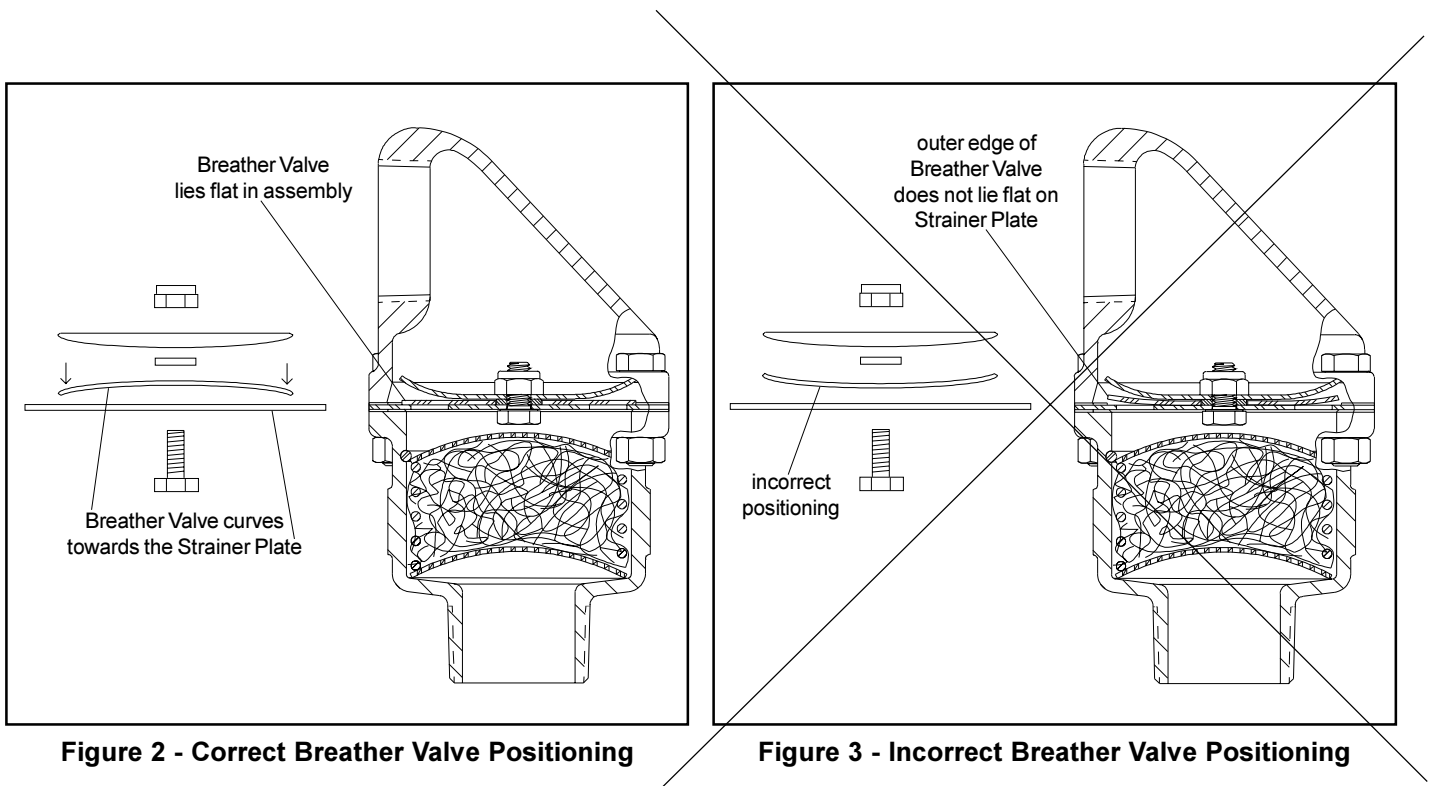
Figure 1 - Exploded View of Compressor Crankcase Breather, Part Nos. 537543 & 650953

service bulletin

Refer to **Figure 1**. Special care must be taken when assembling the Breather Valve Assembly, Part No. 575306 (in the complete Compressor Crankcase Breather Part No. 537543) or Part No. 650954 (in complete Part No. 650953).

Refer to **Figure 2**. The Breather Valve, Part No. 575308, has a natural curve in a resting position. The curve may be slight, but it must be determined which way the Breather Valve is curved. The Breather Valve **MUST BE** assembled curving toward the Strainer Plate, Part No. 575307. After assembly, the outer edge of the Breather Valve should contact completely with the Strainer Plate. The lock washer is placed on the plate in the hole of the Breather Valve. The Valve Stop, Part No. 575309, is now placed on the lock washer. The Valve Stop curves in the opposite direction of the Breather Valve, away from the Strainer Plate. The screw may now be placed through the Strainer Plate. The stop nut can be placed on the Valve Stop and tightened onto the screw.

WARNING: Refer to **Figure 3**. If the Breather Valve is assembled incorrectly, full contact between the Breather Valve and the Strainer Plate may not be reached. This may result in the malfunction of the Compressor Crankcase Valve.



Wabtec Corporation
 1001 Air Brake Avenue
 Wilmerding, Pennsylvania 15148
 (412) 825-1000 • Fax (412) 825-1019