

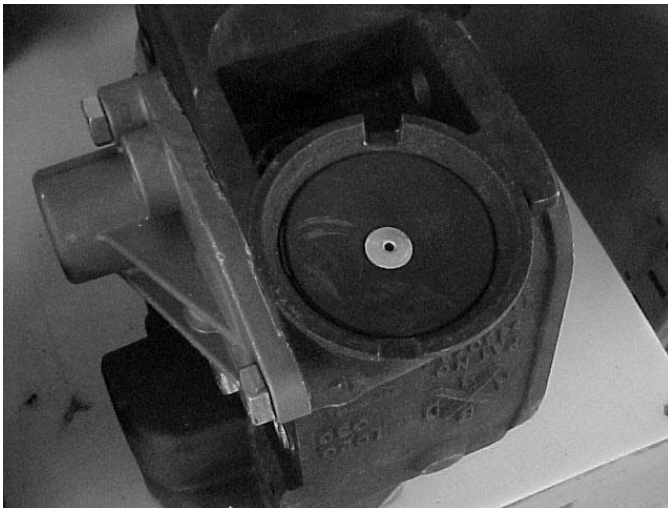
FREIGHT CONTROL VALVES

New Vent Protector for ABDX Emergency Portion

MAY, 2004

A NEW vent protector configuration is being standardized for the use in the ABDX Emergency Portion. The new vent protector is held in place with a retaining ring and the valve body is not tapped with threads.

Photos Comparing Old Vent Protector vs. New Standard Vent Protector

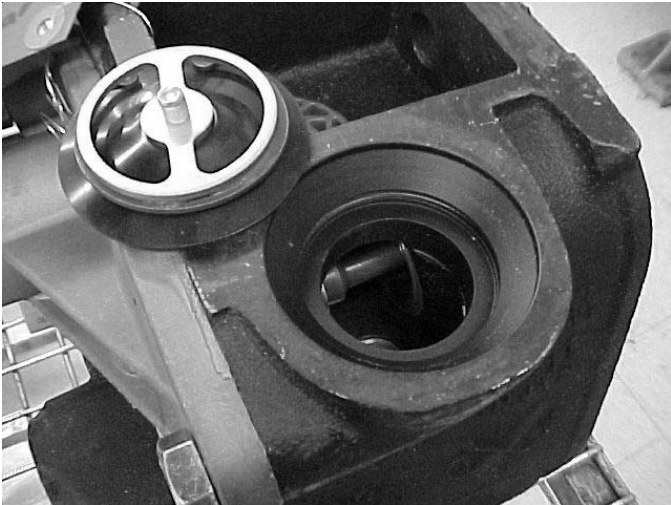


Old Standard Vent Protector Design

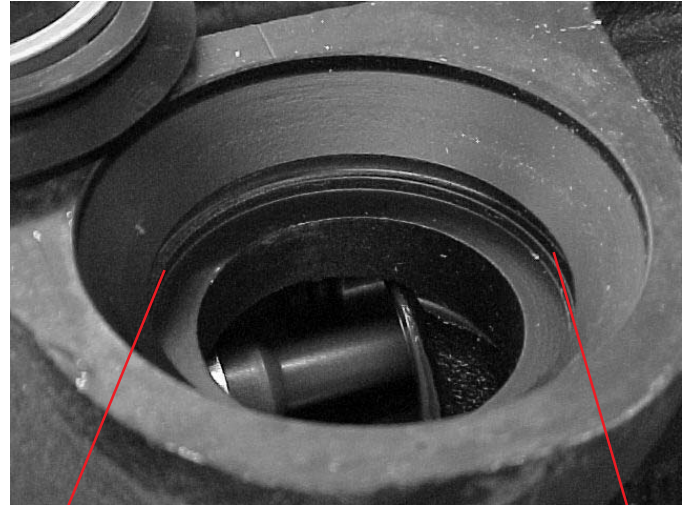


New Standard Vent Protector Design

service bulletin

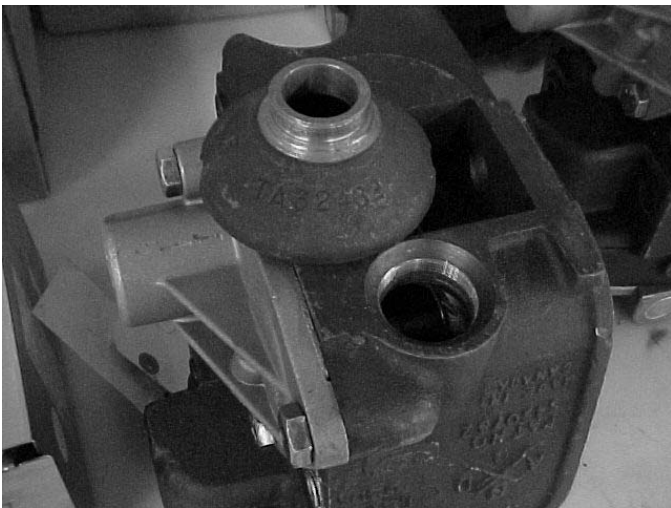


New Vent Protector Assembly/Valve Body

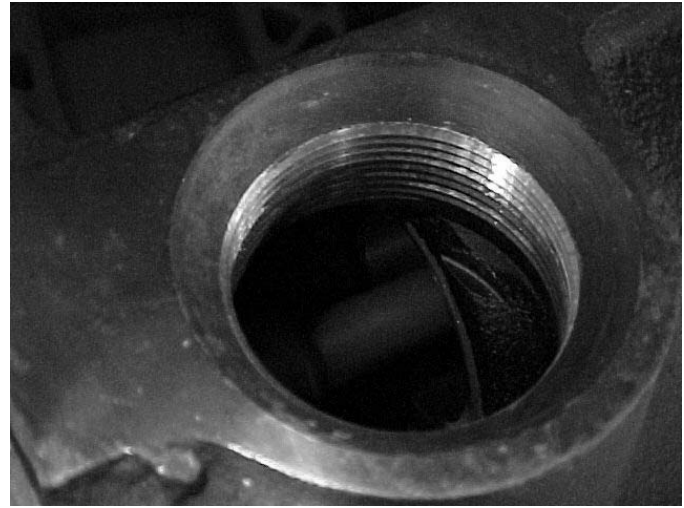


**Body Contains No Tapped Threads
(Just machined groove for snap ring)**

NOTE: Old style vent protector will NOT screw into the new style valve body.



**Old Standard Vent Protector with Threaded End
Vent Protector**



**Tapped Threads in Body for Old Standard
Vent Protector**