

## ABD & ABDX SERVICE PORTIONS

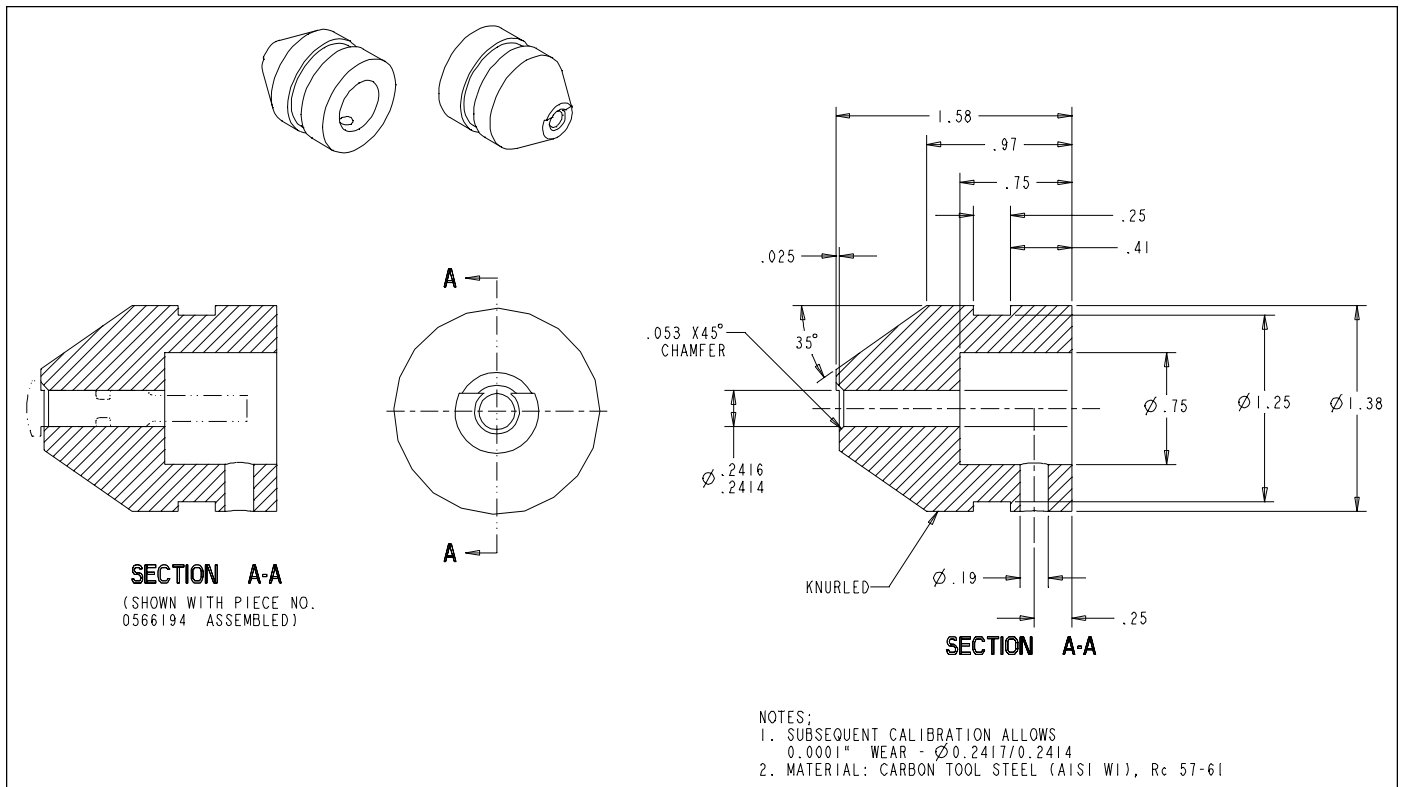
### Inspection Procedures for Service Accelerated Release Valve Plunger Pin

OCTOBER, 1999

WABCO Freight Car Products has recently developed and implemented an enhanced inspection method for inspecting the service accelerated release valve plunger pin, **Part No. 0566194**, to determine whether the plunger pin is bent and not reusable during the C.O.T. of ABD or ABDX type service portions.

Currently in most repair shops, the plunger pin is visually inspected, and severely bent pins are readily detected and discarded. However, slightly bent pins are more difficult to detect. Pins that are bent are unacceptable for service.

WABCO has developed a NEW gauge, **Part No. 0663396**, to assist in identifying slightly bent plunger pins (see **Figure 1**).

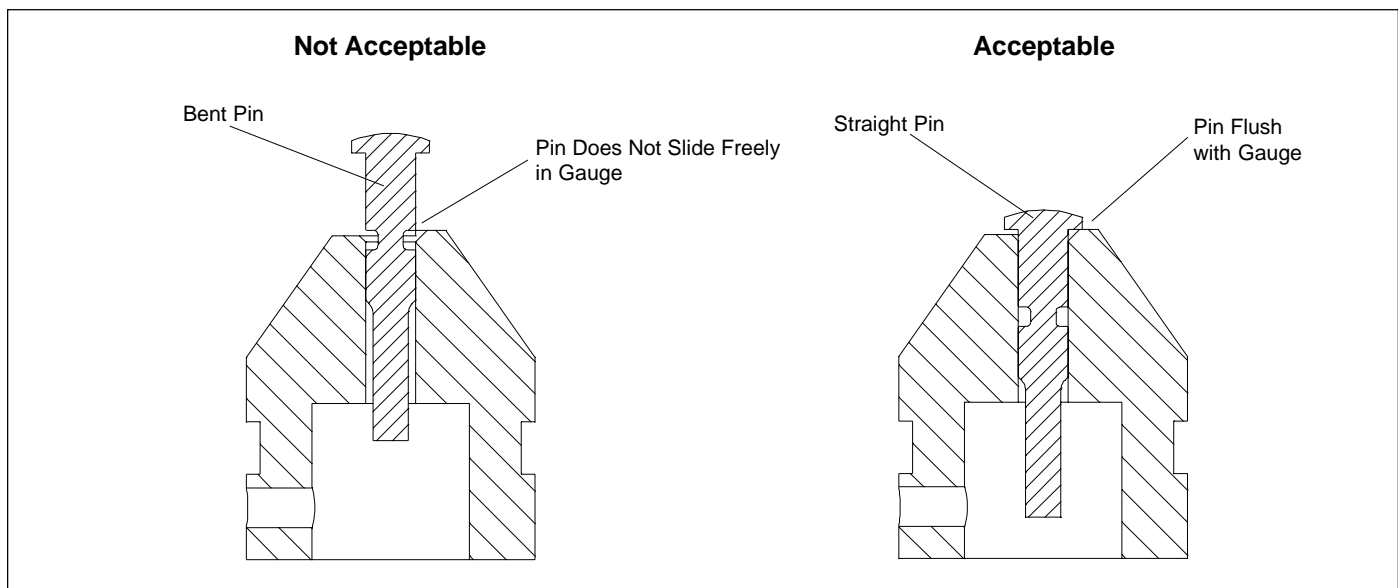


**Figure 1 - Dimensional Drawing - Service Accelerated Release Valve Gauge, Part No. 0663396**

## service bulletin

WABCO has developed the following procedure to inspect for bent plunger pins. Recommended mounting of the gauge is at or near eye level for easy viewing during the pin inspection process.

1. All plunger pins must be clean and dry prior to gauging.
2. Pins are to be gauged prior to O-ring installation.
3. Acceptable/straight pins should freely and entirely enter the gauge when the pin is dropped into the gauge bore. The head of the plunger pin should be, at least, flush with the top of the gauge surface (**see Figure 2**). Pins that pass this test are to be reused during assembly.



**Figure 2 - Bent vs. Straight Pins**

4. If the pin hangs up and does not initially drop freely into the gauge bore, we permit slightly lifting and rotating the pin, then releasing it to see if it enters the gauge. **NO PUSHING.**
5. Pins that **DO NOT** pass this test are to be **SCRAPPED** and replaced with **NEW** pins during assembly.
6. The gauge is **NOT TO BE USED** to straighten any bent pins.
7. Reasonable care must be taken to safeguard gauge placement, storage, etc. Adequate training of personnel in the use and handling of the gauge is mandatory.

Please contact your local Wabtec Corporation Representative or the Freight Field Service Engineering Department at (412) 825-1000 with any questions.